

'Change Settings' Application Notes

Using this Application One can Configure the default Eprom Diagnostics Parameters as well as Eprom Programming Utility Parameters.

Eprom Diagnostics Parameters

Test Selection Settings

- 1 Register Test
- 2 Quick LoopBack Test
- 3 Long LoopBack Test
- 4 External LoopBack Test

Packet Properties

If any one of Long LoopBack Test or External LoopBack Test is Selected, One can Configure the Packet Count and Packet Size.

	Min. Count	Max. Count
Packet Count	1	1,00,000
Packet Size	1	1514

EEPROM Programming Utility Parameters

Auto Options

- 1 OverWrite Address
- 2 Verify Ethernet Address
- 3 Ethernet Diagnostics

Last Assigned Address

This Utility has the Option for

- 1 Assigning the Last Mac Address.
- 2 Clearing the Last Mac Address.

Other Features

- 1 The Utility also has an PassWord Protection Option.
- 2 The User will be given a Default PassWord.
- 3 The Admin User First will be Prompted for the PassWord. The Default PassWord is 'mos123'. By Selecting Change PassWord Option he can Change the PassWord.
- 4 On **UnInstallation**, the **Old PassWord is No more Valid**. The Admin has to give the Default PassWord to Change the Settings.

Screen Shots : On clicking change settings icon in Driver disk of MCS7830 , following windows appear

a. Initial Screen with Default Values

The 'Change Settings' window displays the following configuration options:

- Eeprom and Diagnostics Utility Settings**
 - Eeprom Diagnostics**
 - Test Items**
 - ☒ Register Test
 - ☒ Quick LoopBack Test
 - ☒ Long LoopBack Test
 - ☒ External LoopBack Test
 - Packet Properties**
 - Packet Count: 10
 - Packet Size: 1514
 - Log**
 - ☒ Enable Logging
 - Eeprom Utility**
 - Auto Options**
 - ☒ OverWrite Address
 - ☒ Verify Ethernet Address
 - ☒ Ethernet Diagnostics
 - Previous MAC Address**
 - Last Assigned Address: [][][][][][]
 - Clear Last Assigned Mac Address

Press 'Change Settings' to Modify the EEPROM Utility and Ethernet Diagnostics Parameters

Buttons: Change Settings, Exit

Click on Change settings button

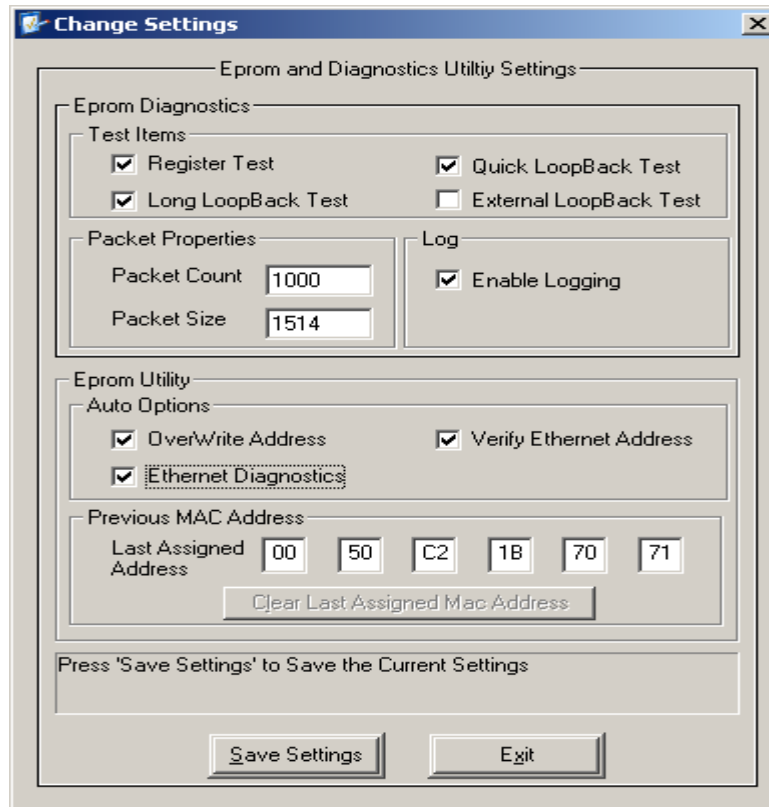
b. The application Prompts for a PassWord

The 'Enter PassWord' window contains the following fields and buttons:

- UserName**: admin
- Password**: ****
- Buttons: Verify Password, Change Password, Exit

Enter Admin password & click on Verify password

3. Once above is done, all the Parameters selections can changed in the screen below



Select the default settings as required and click save settings button

4. Change PassWord Option



Note:

The Diagnostics Utility and Eprom Programming Utility with Version 1.3.0.0 only can be used with this Change Settings Application. The Settings modified with this 'Change Settings' Application will not be reflected in Older versions of Diagnostics Utility and Eprom Programming Utility.